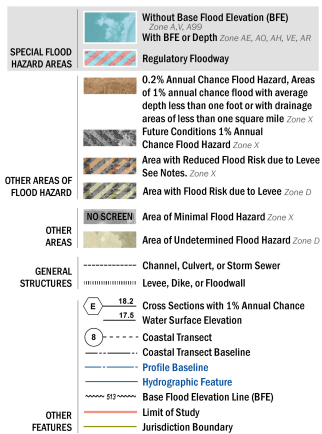


FLOOD HAZARD INFORMATION

SEE FIS REPORT FOR DETAILED LEGEND AND INDEX MAP FOR FIRM PANEL LAYOUT
THE INFORMATION DEPICTED ON THIS MAP AND SUPPORTING
DOCUMENTATION ARE ALSO AVAILABLE IN DIGITAL FORMAT AT
[HTTPS://MSC.FEMA.GOV](https://MSC.FEMA.GOV)



NOTES TO USERS

For information and questions about this map, available products associated with this FIRM including historic versions of the FIRM, how to order products or the National Flood Insurance Program in general, please call the FEMA Map Information eXchange at 1-877-FEMA-MAP (1-877-336-2627) or use the FEMA Map Service Center website at <http://msc.fema.gov>. Available products may include previously issued Letters of Map Change, a Flood Insurance Study Report, and/or digital versions of this map. Many of these products can be ordered or obtained directly from the website. Users may determine the current map date for each FIRM panel by visiting the FEMA Map Service Center website or by calling the FEMA Map Information eXchange.

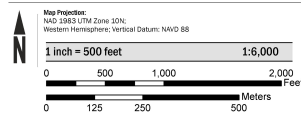
Communities adjoining land on adjacent FIRM panels must obtain a current copy of the adjacent panel as well as the current FIRM index. These may be obtained directly from the Map Service Center at the number listed above.

For community and countywide map dates refer to the Flood Insurance Study report for this jurisdiction.

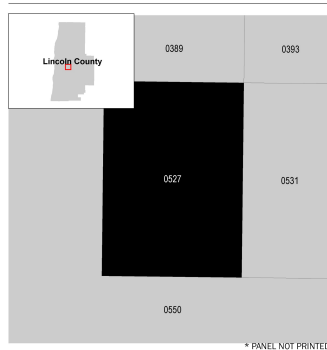
To determine if flood insurance is available in the community, contact your insurance agent or call the National Flood Insurance Program at 1-800-638-6620.

Base map information upon which this FIRM was developed and/or compiled in digital form by the Oregon Department of Geology and Mineral Industries (DOGAMI). Data sources include: DOGAMI, Oregon State University, U.S. Geological Survey, U.S. Geological Survey, Oregon Department of Fish and Wildlife, Oregon Department of Transportation, Oregon Water Resources Department, Oregon Department of Administrative Services, Geospatial Enterprise Office, and Lincoln County. Base map information was reclassified to 3-foot resolution lidar topographic data acquired in 2008, 2009, 2010, 2011, and 2012.

SCALE



PANEL LOCATOR



NATIONAL FLOOD INSURANCE PROGRAM FLOOD INSURANCE RATE MAP

LINCOLN COUNTY, OREGON
And Incorporated Areas
PANEL 527 of 900

COMMUNITY	NUMBER	PANEL	SUFFIX
LINCOLN COUNTY	410129	0527	E
TOLEDO, CITY OF	410133	0527	E

VERSION NUMBER
2.3.2.1
MAP NUMBER
410A100527E
MAP REVISED
OCTOBER 18, 2019